

Oak: Across Enemy Lines

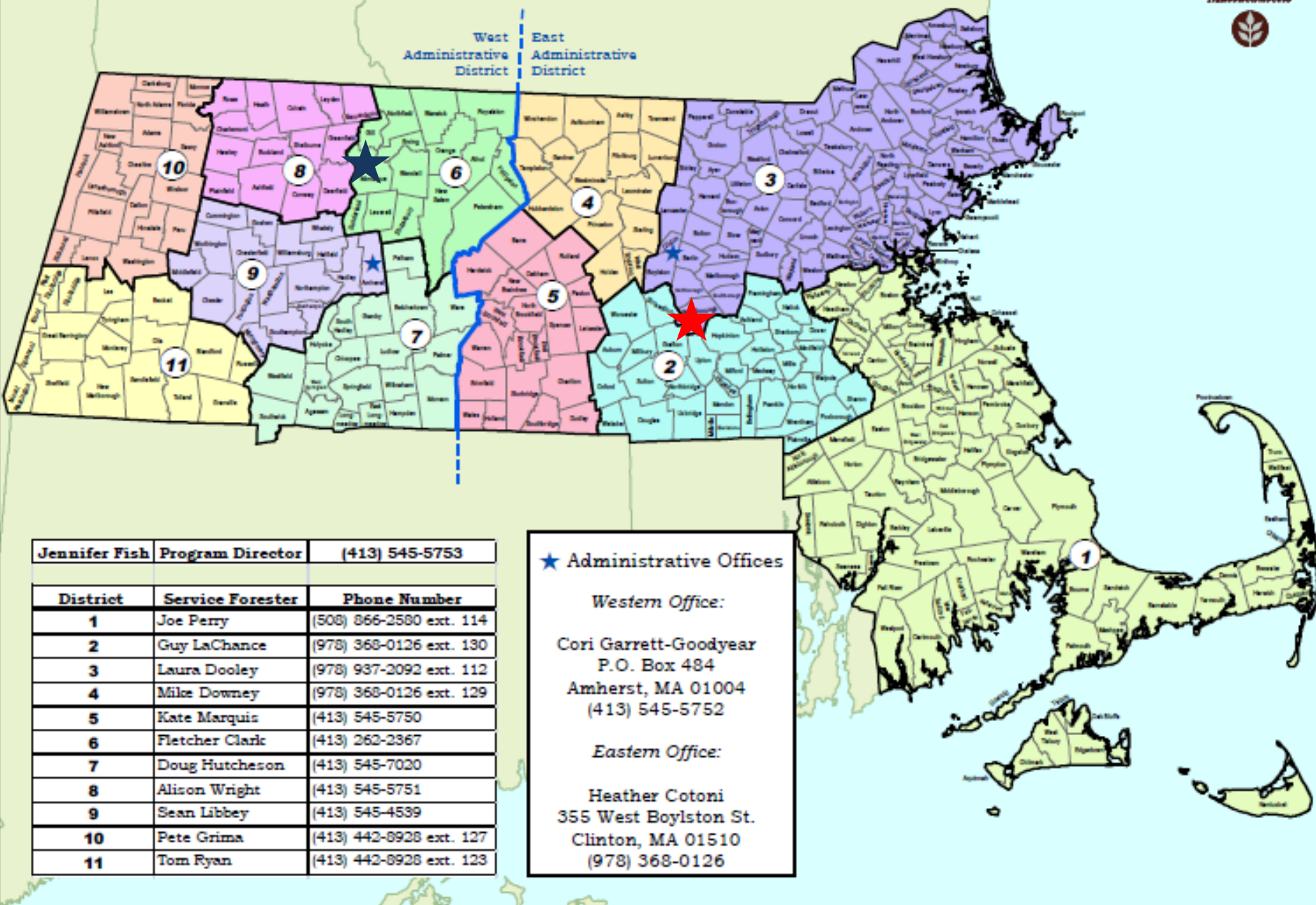
dcr
Massachusetts



Peter Grima

Mass. DCR Service Forester

Massachusetts Department of Conservation and Recreation Service Forestry Districts - July 2015



Jennifer Fish	Program Director	(413) 545-5753
District	Service Forester	Phone Number
1	Joe Perry	(508) 866-2580 ext. 114
2	Guy LaChance	(978) 368-0126 ext. 130
3	Laura Dooley	(978) 937-2092 ext. 112
4	Mike Downey	(978) 368-0126 ext. 129
5	Kate Marquis	(413) 545-5750
6	Fletcher Clark	(413) 262-2367
7	Doug Hutcheson	(413) 545-7020
8	Alison Wright	(413) 545-5751
9	Sean Libbey	(413) 545-4539
10	Pete Grima	(413) 442-8928 ext. 127
11	Tom Ryan	(413) 442-8928 ext. 123

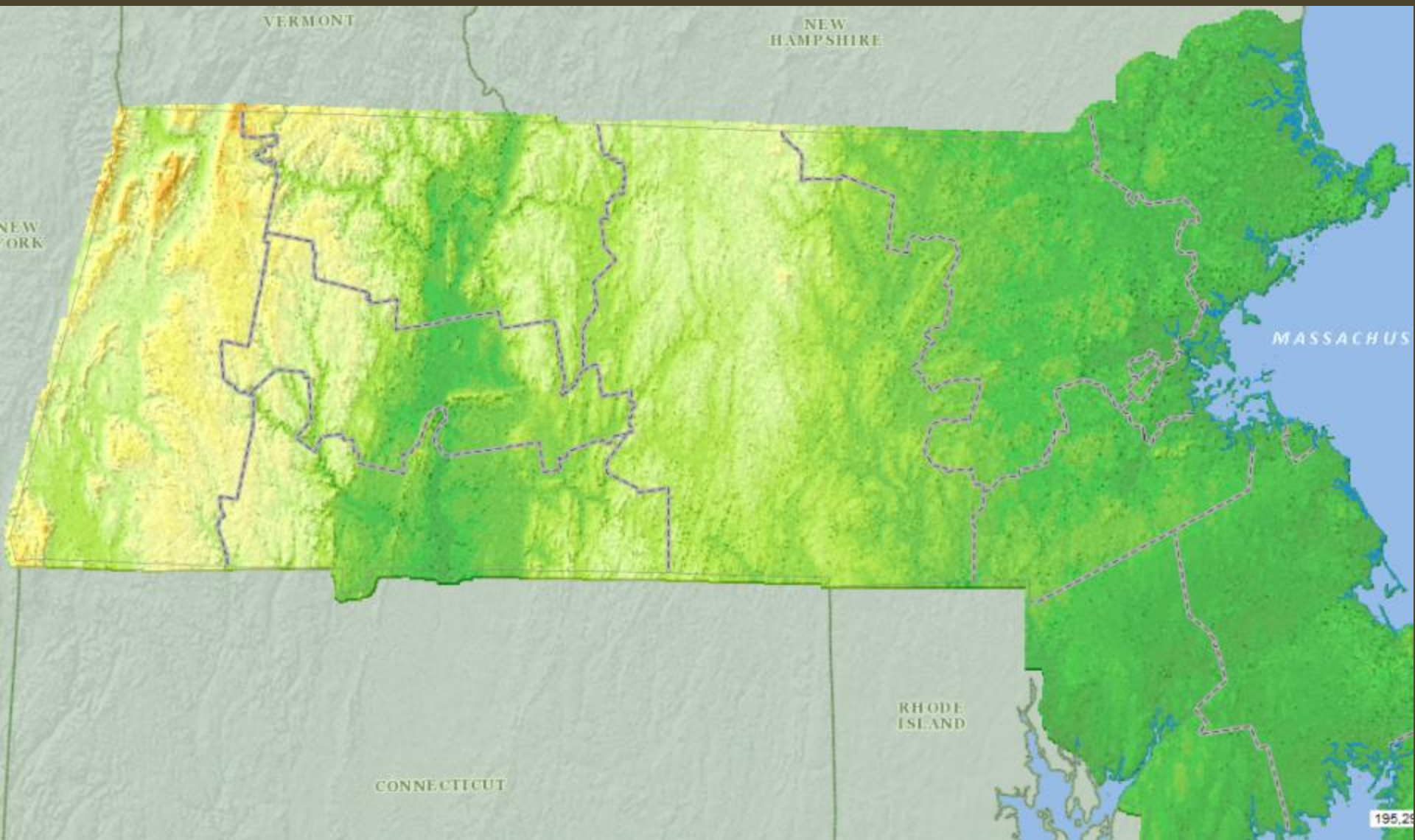
★ Administrative Offices

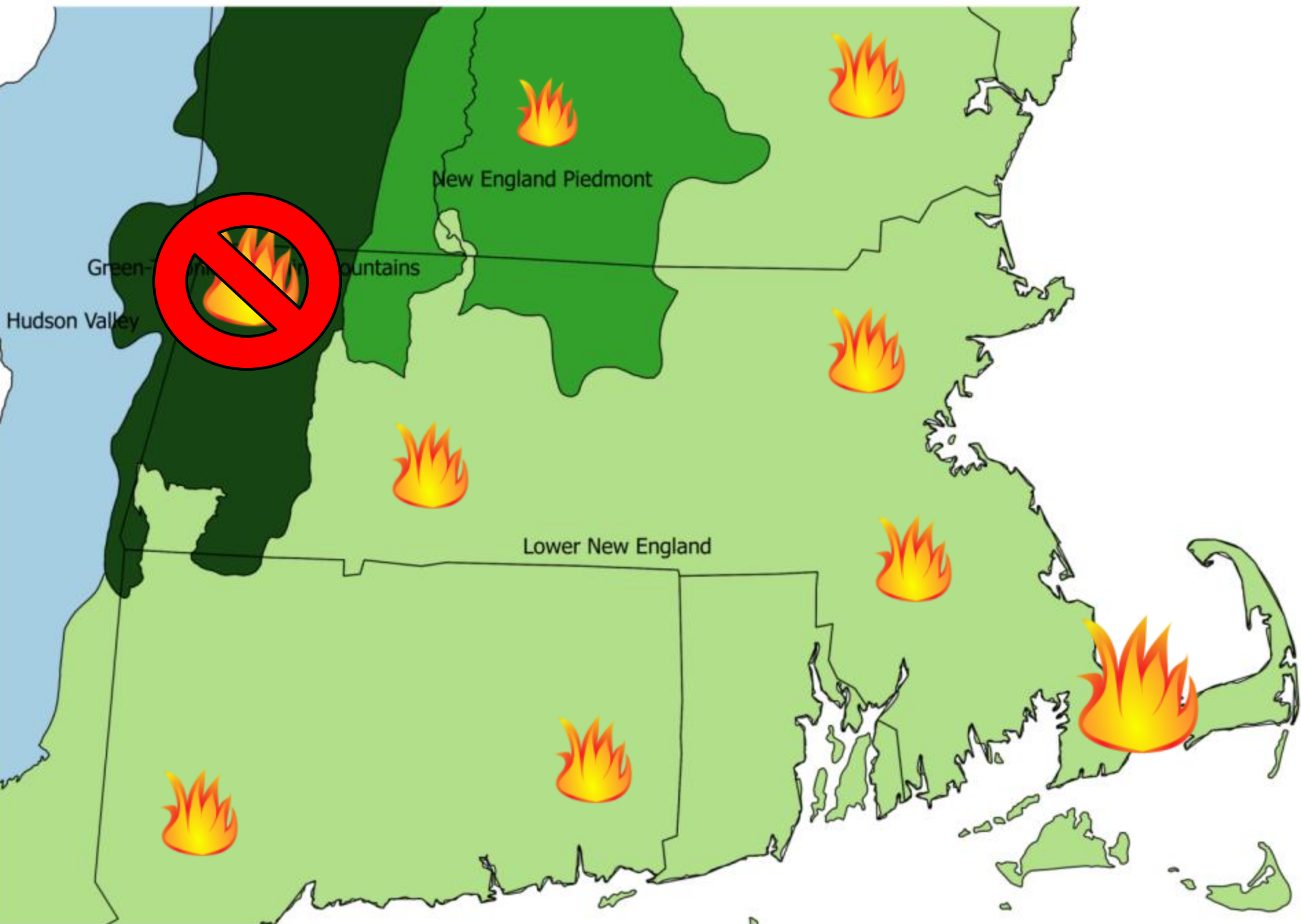
Western Office:

Cori Garrett-Goodyear
P.O. Box 484
Amherst, MA 01004
(413) 545-5752

Eastern Office:

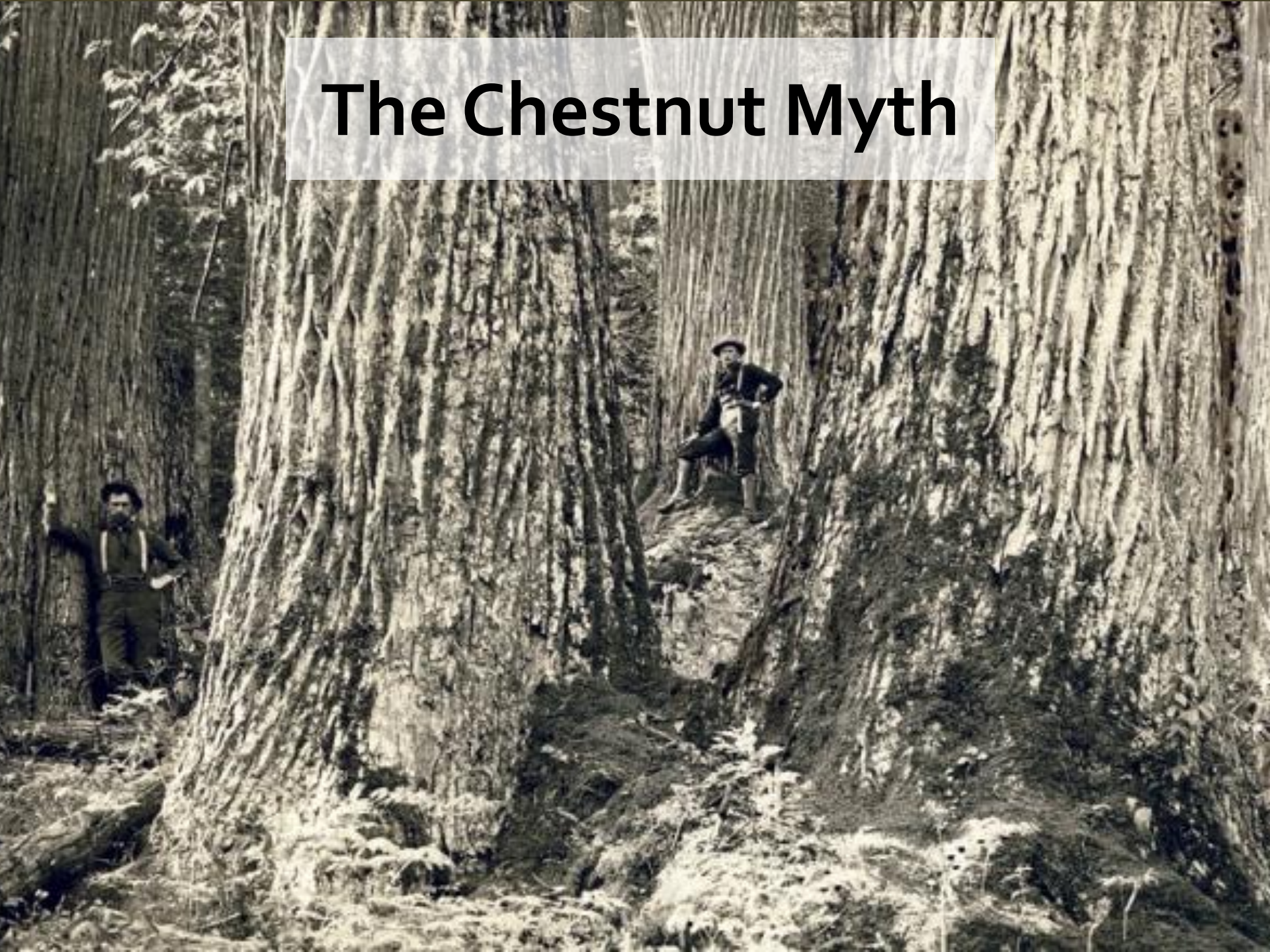
Heather Cotoni
355 West Boylston St.
Clinton, MA 01510
(978) 368-0126

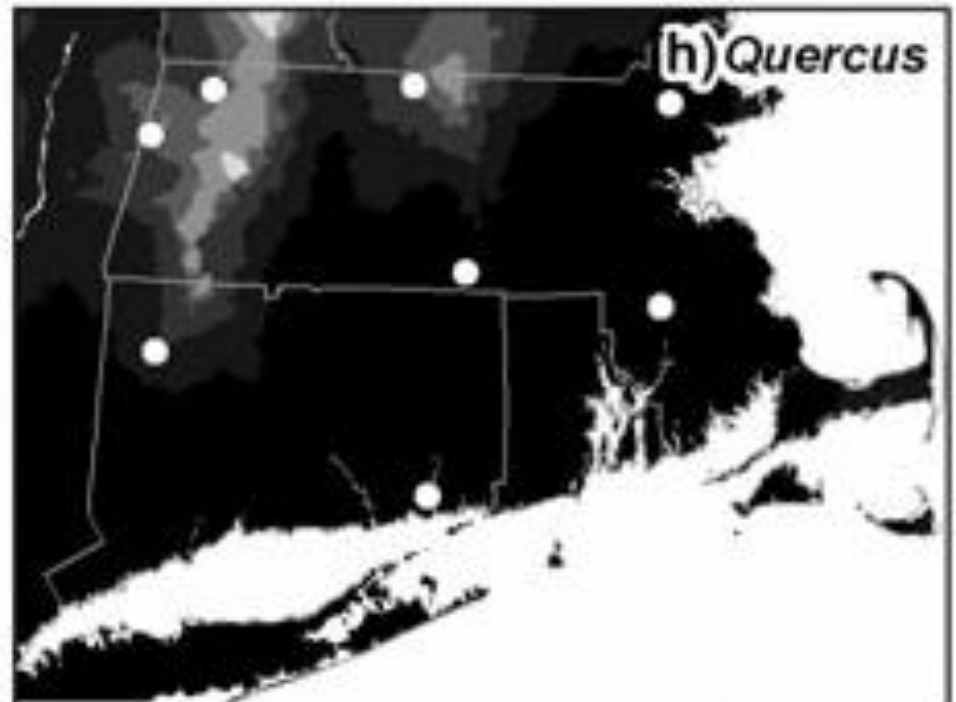
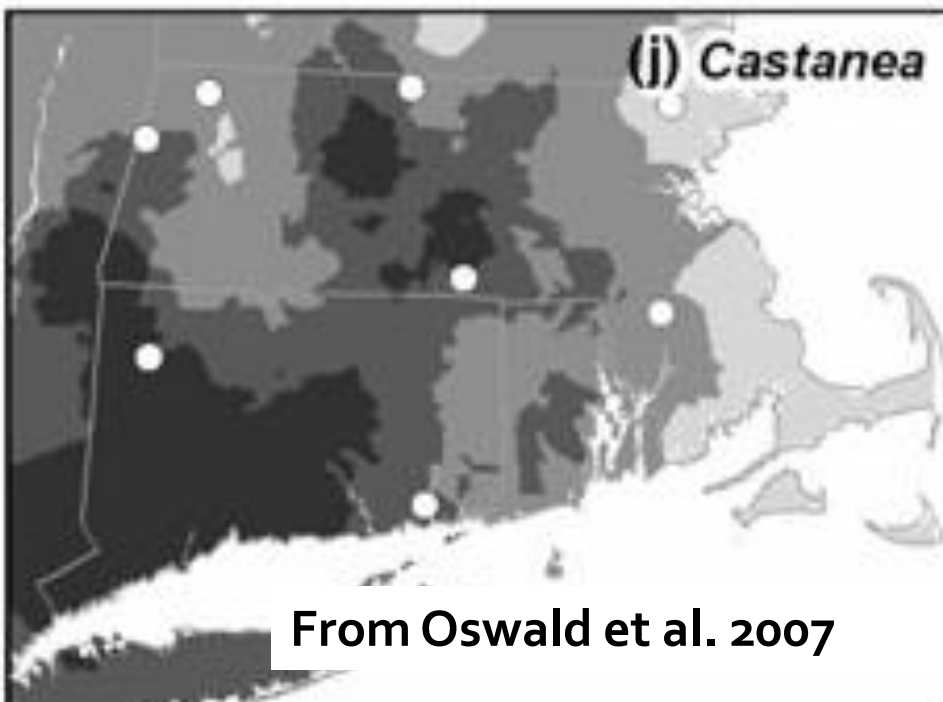
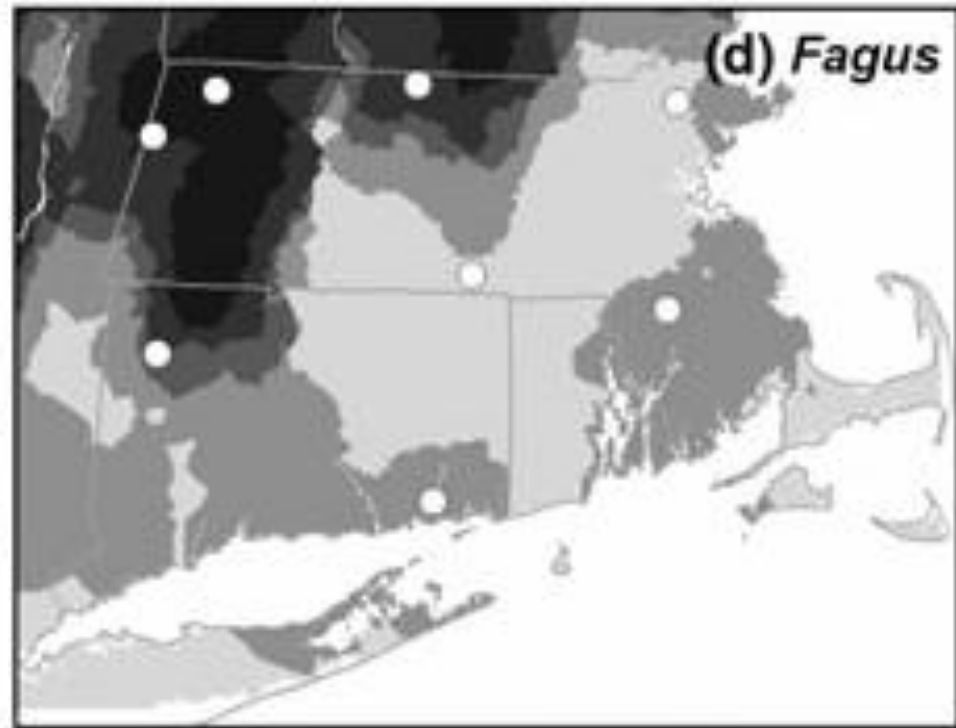
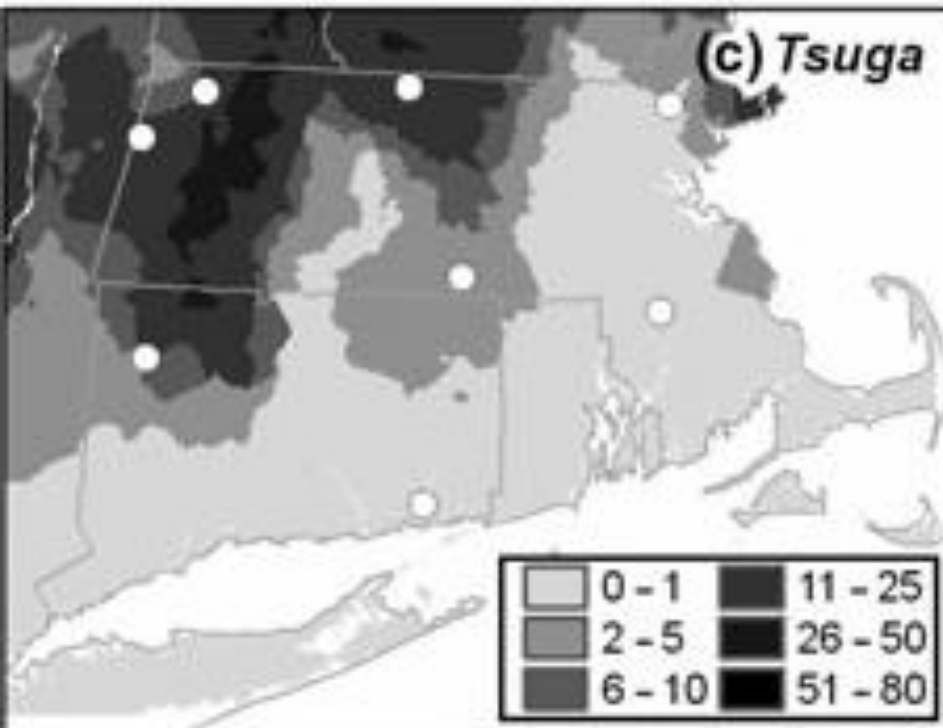




- 
- ***Myth-Busting***
 - Chestnut Myth
 - Asbestos Forest Myth
 - “Oak Site” Myth
 - ***Red Oak: Trailblazer***
 - ***Opportunities***

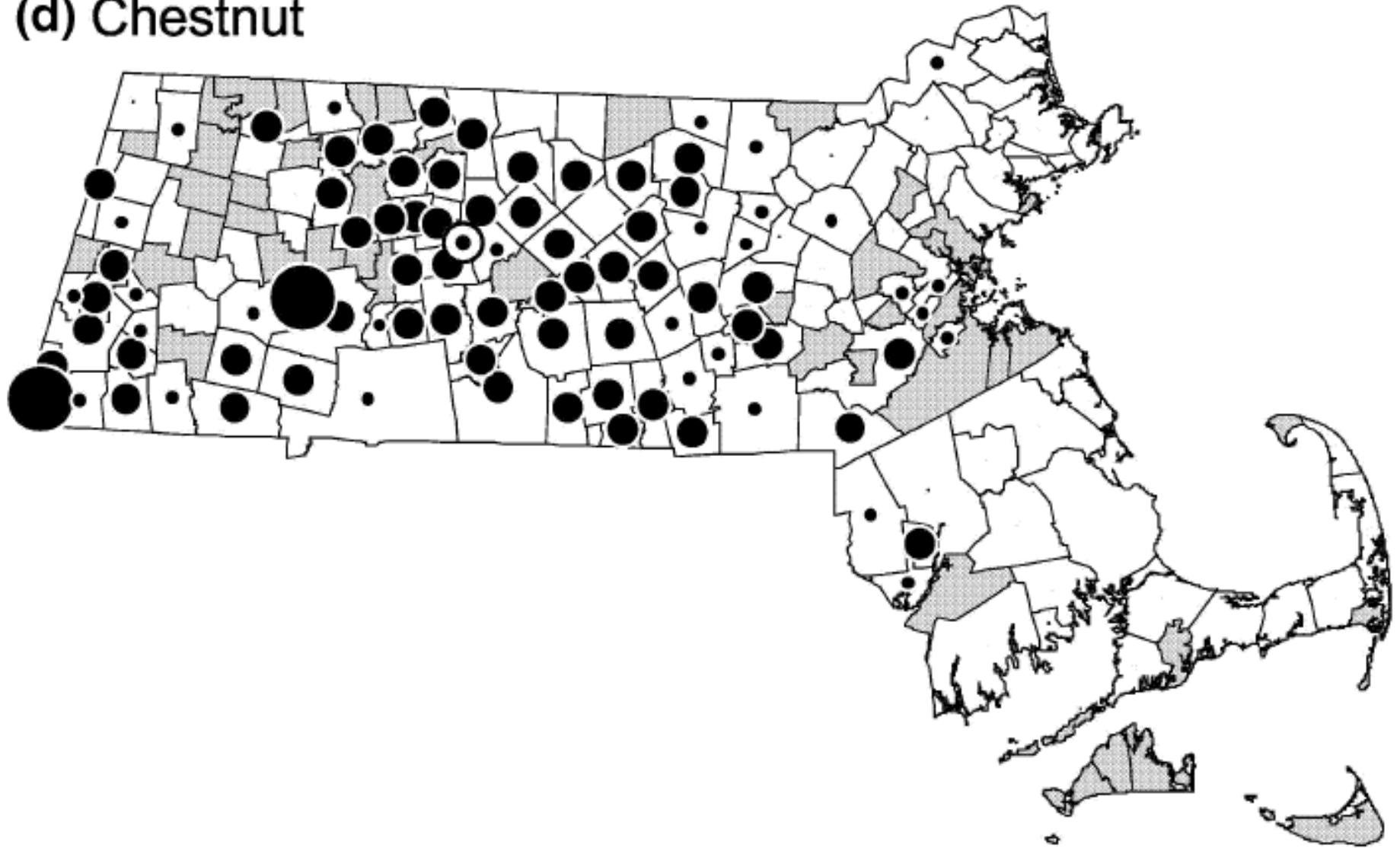
The Chestnut Myth





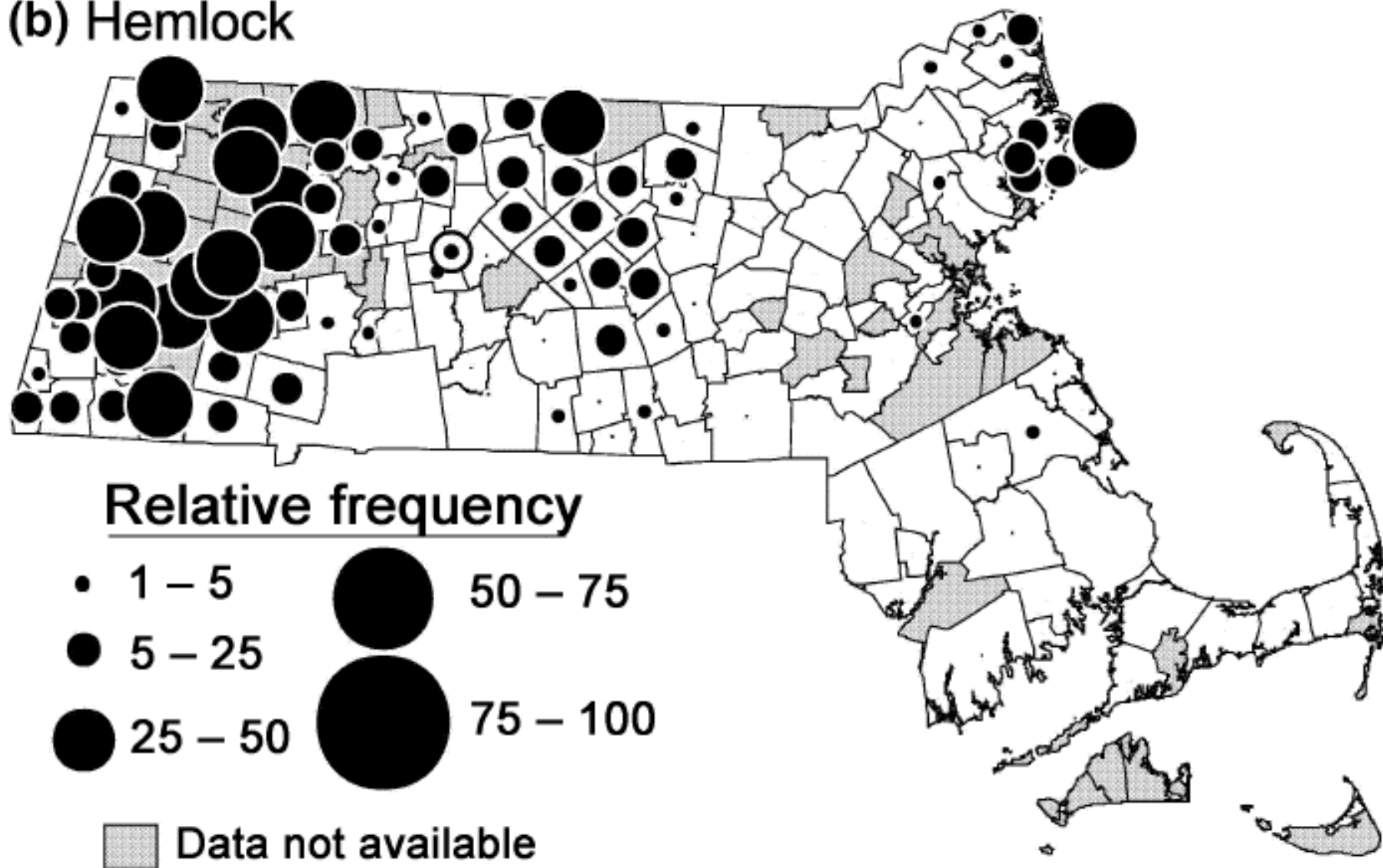
From Oswald et al. 2007

(d) Chestnut



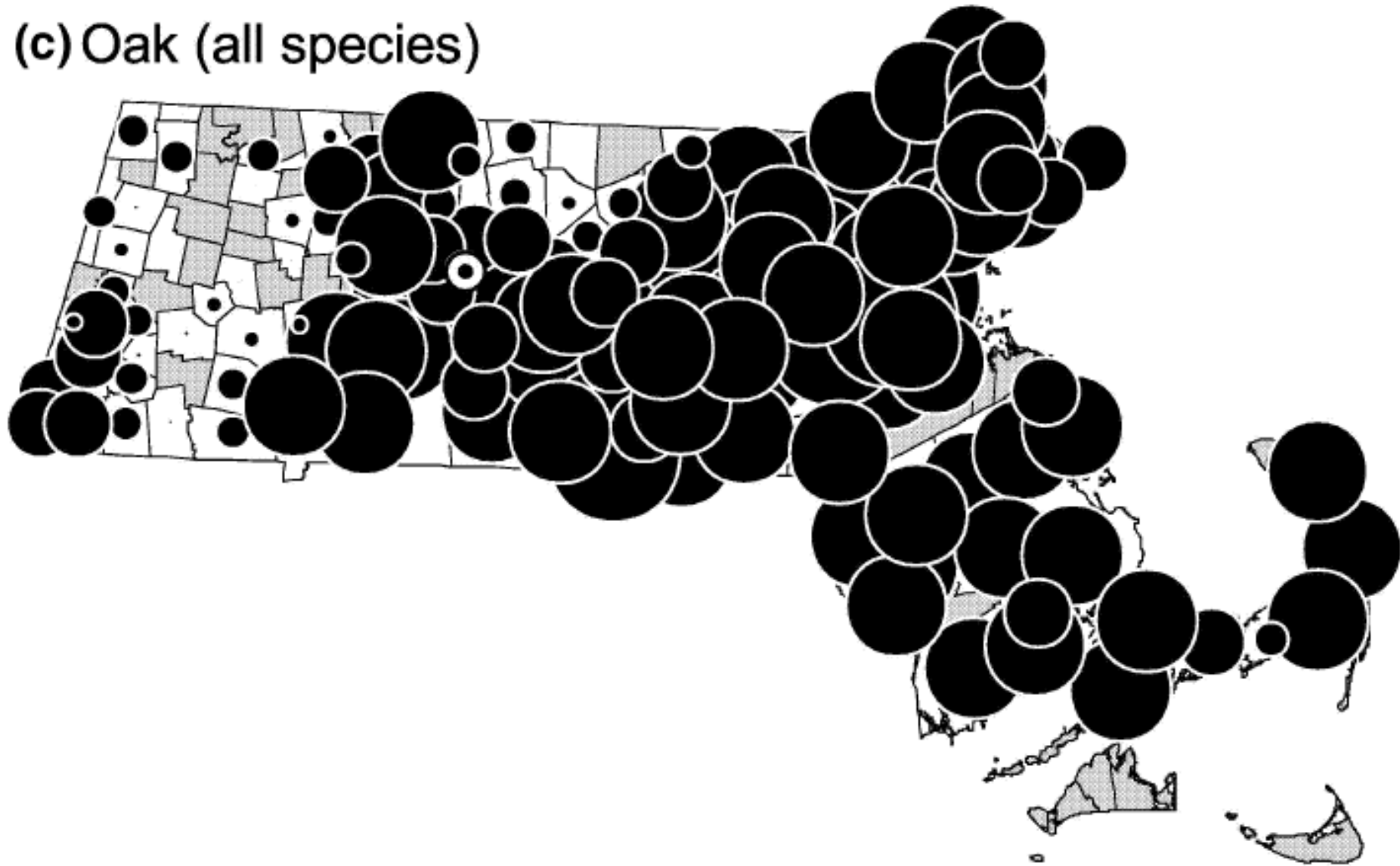
From "Oak, Chestnut & Fire" (Foster et al. 2002)

(b) Hemlock



From "Oak, Chestnut & Fire" (Foster et al. 2002)

(c) Oak (all species)



From "Oak, Chestnut & Fire" (Foster et al. 2002)



Beech vs. Oak

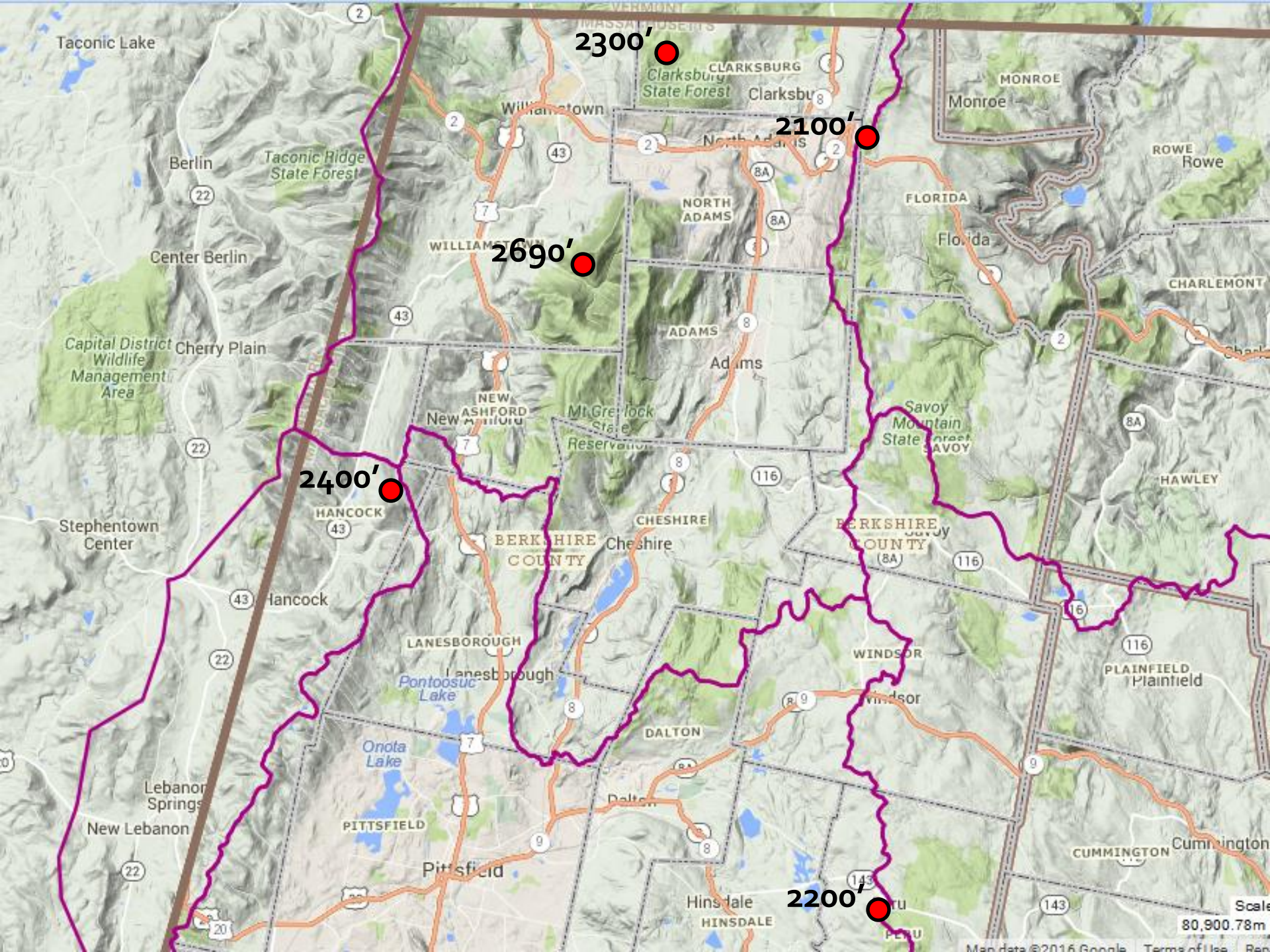
...to be continued

“Asbestos Forest” Myth

Mt. Prospect, el. 2690'

Mt. Greylock, el. 3491'







“Oak Site” Myth

- North Berkshire
 - Loamy soils
 - Negligible outwash sites
 - Wetter, cooler climate
 - Rich-mesic sites abound

Red Oak ubiquitous!

- **October Mtn. SF**

- 276 acres
- 1800-1900' el.
- 536 MBF Ash
- 152 MBF Maple
- Ø MBF Oak



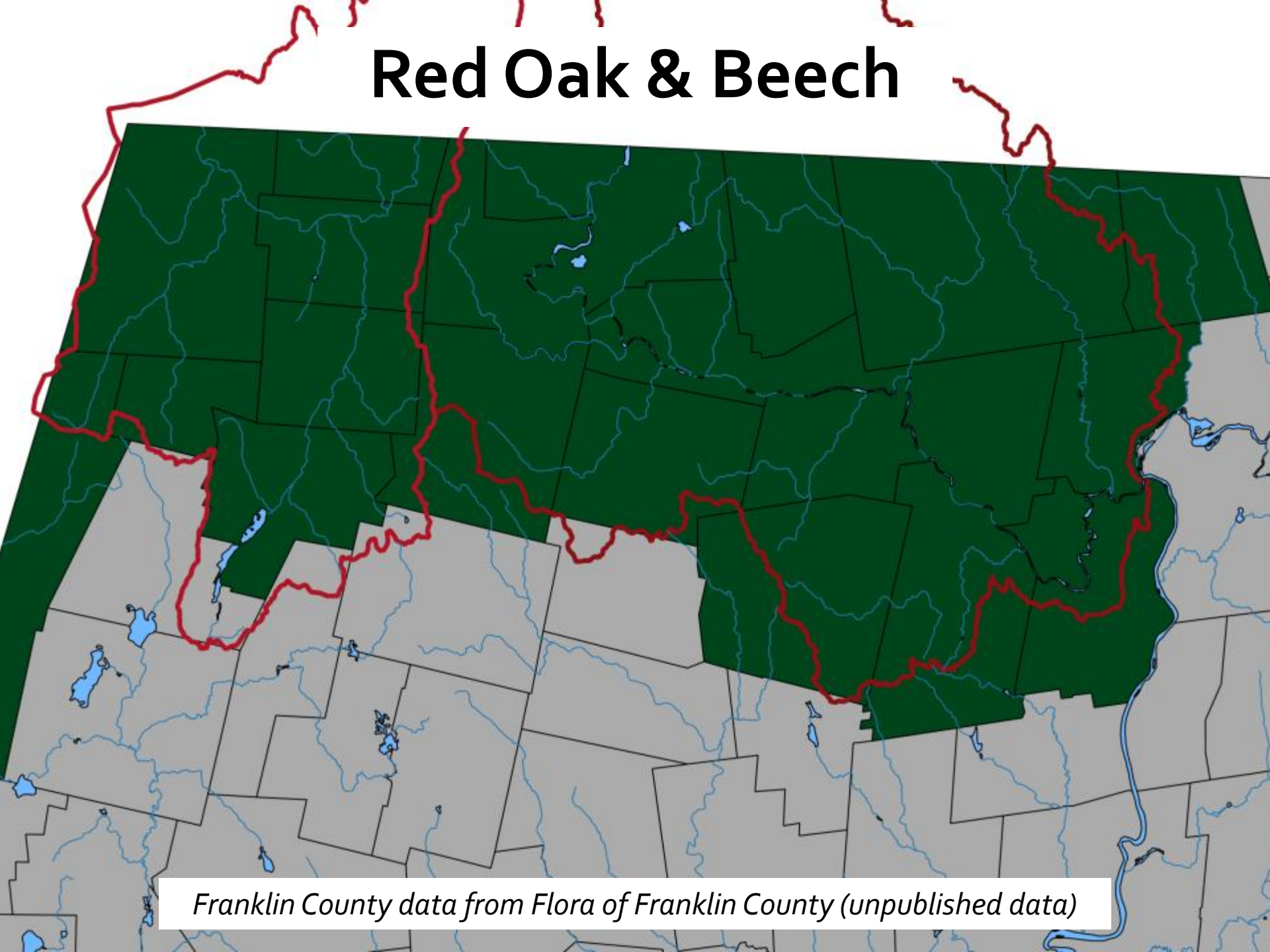
“Oak Site” Myth



Red Oak: Trailblazer

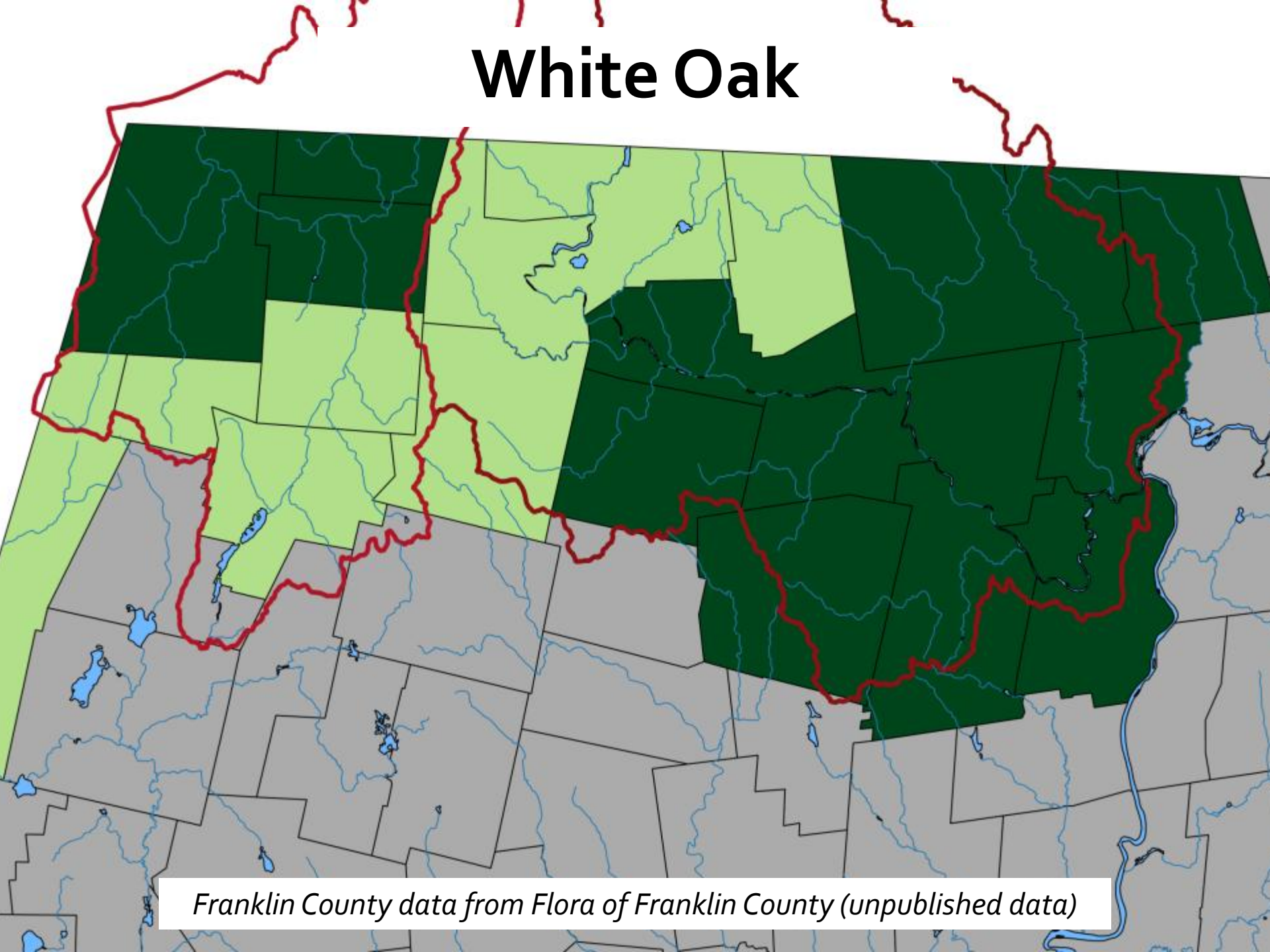


Red Oak & Beech



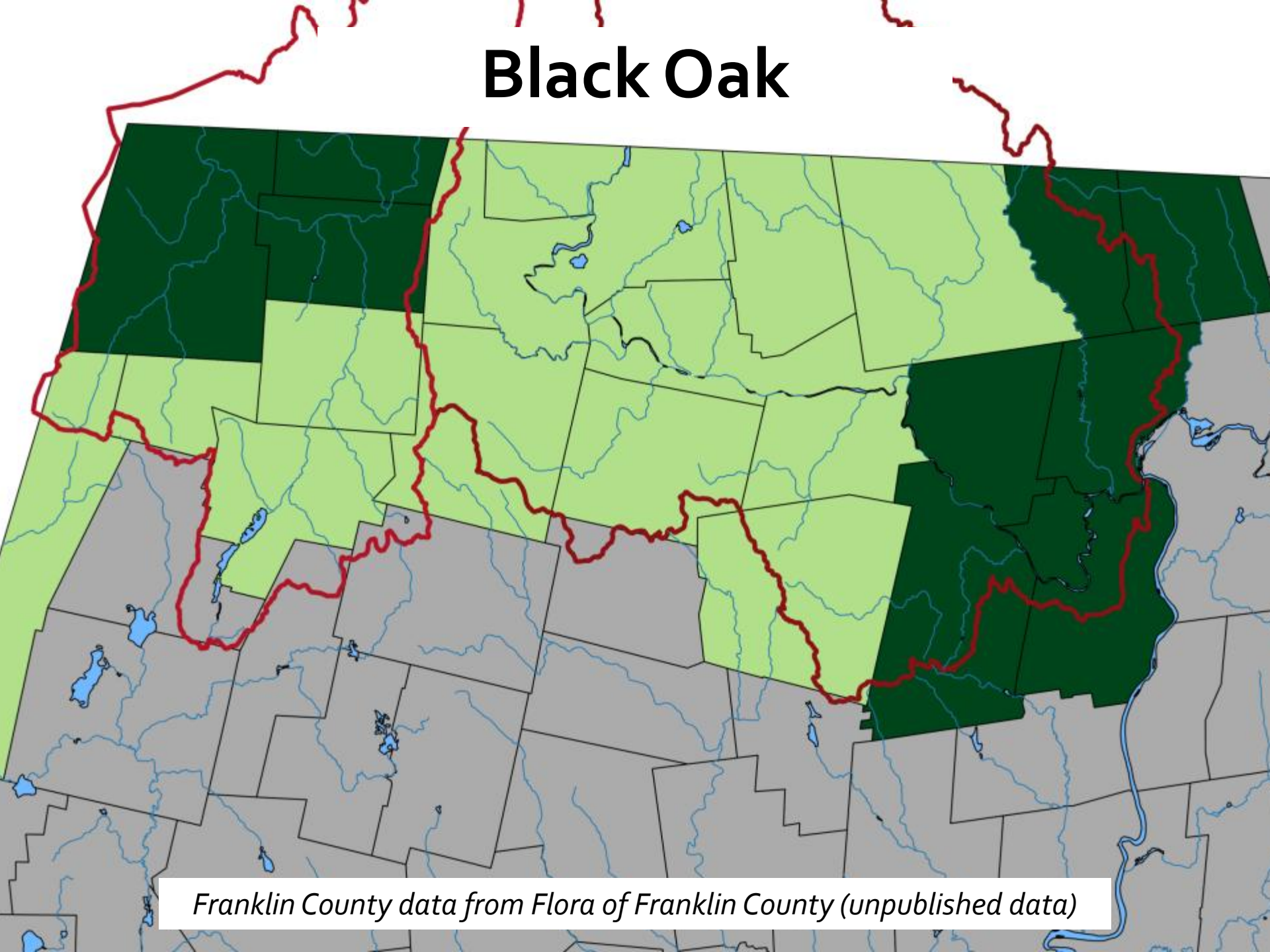
Franklin County data from Flora of Franklin County (unpublished data)

White Oak



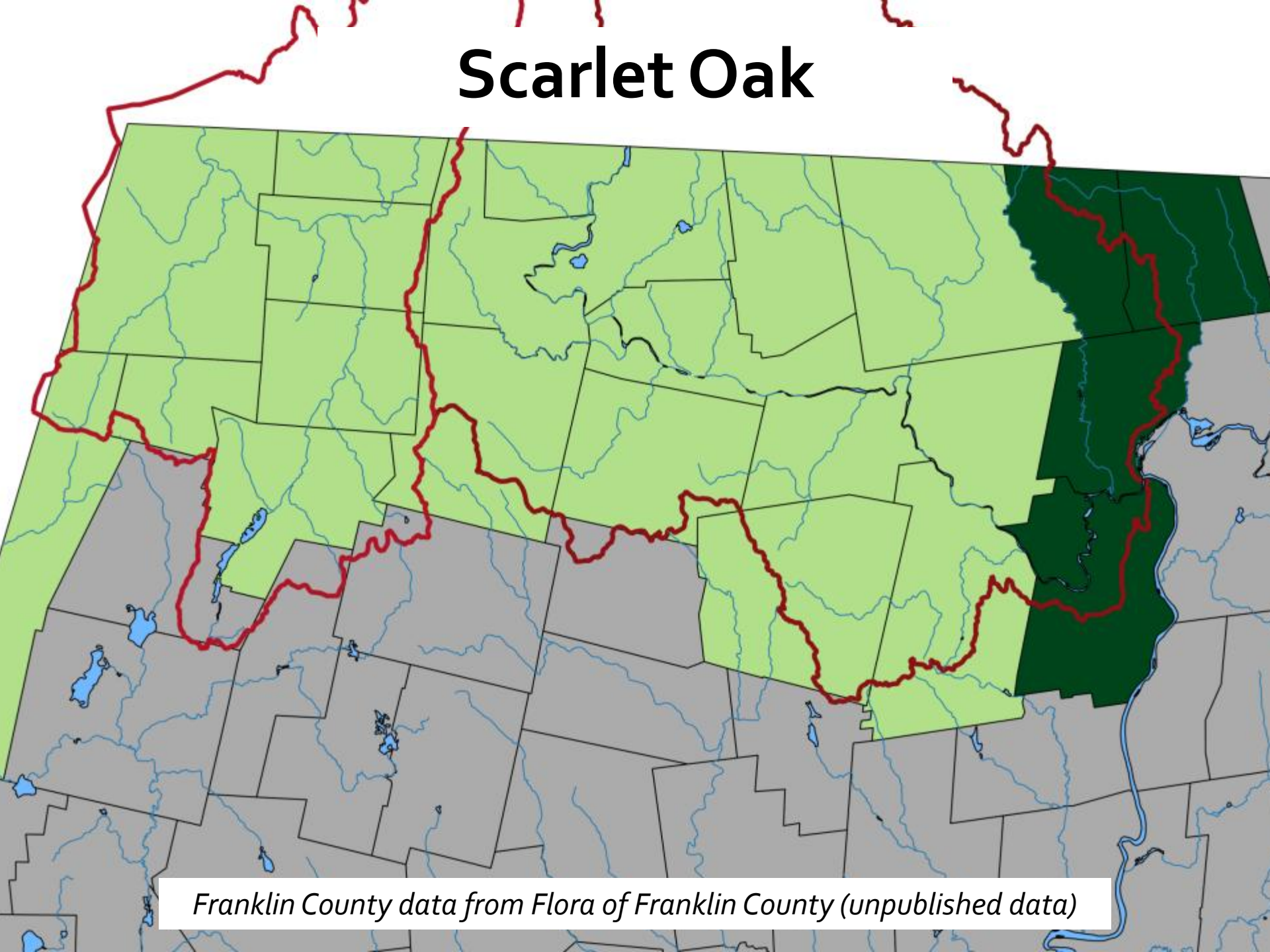
Franklin County data from Flora of Franklin County (unpublished data)

Black Oak



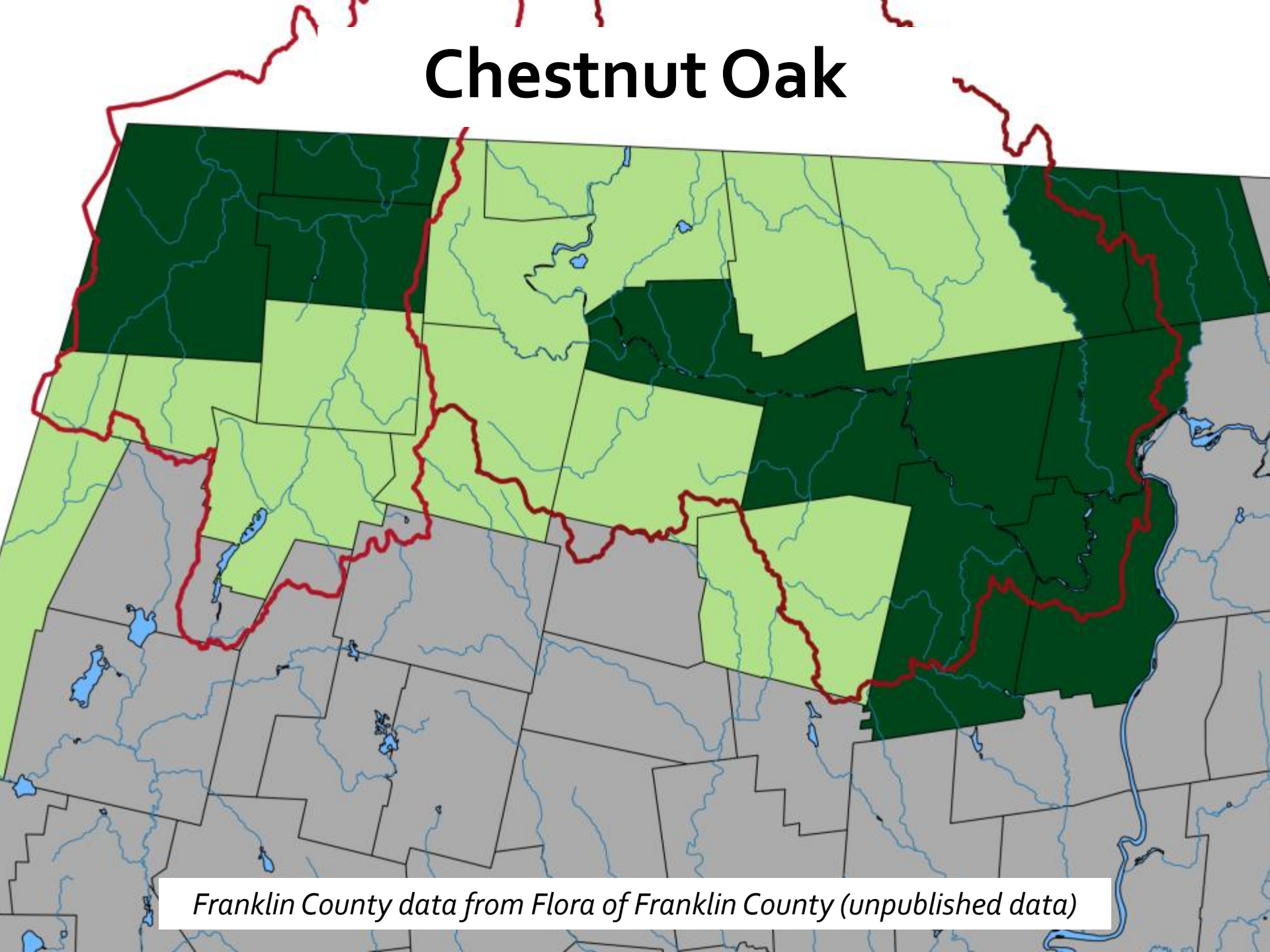
Franklin County data from Flora of Franklin County (unpublished data)

Scarlet Oak



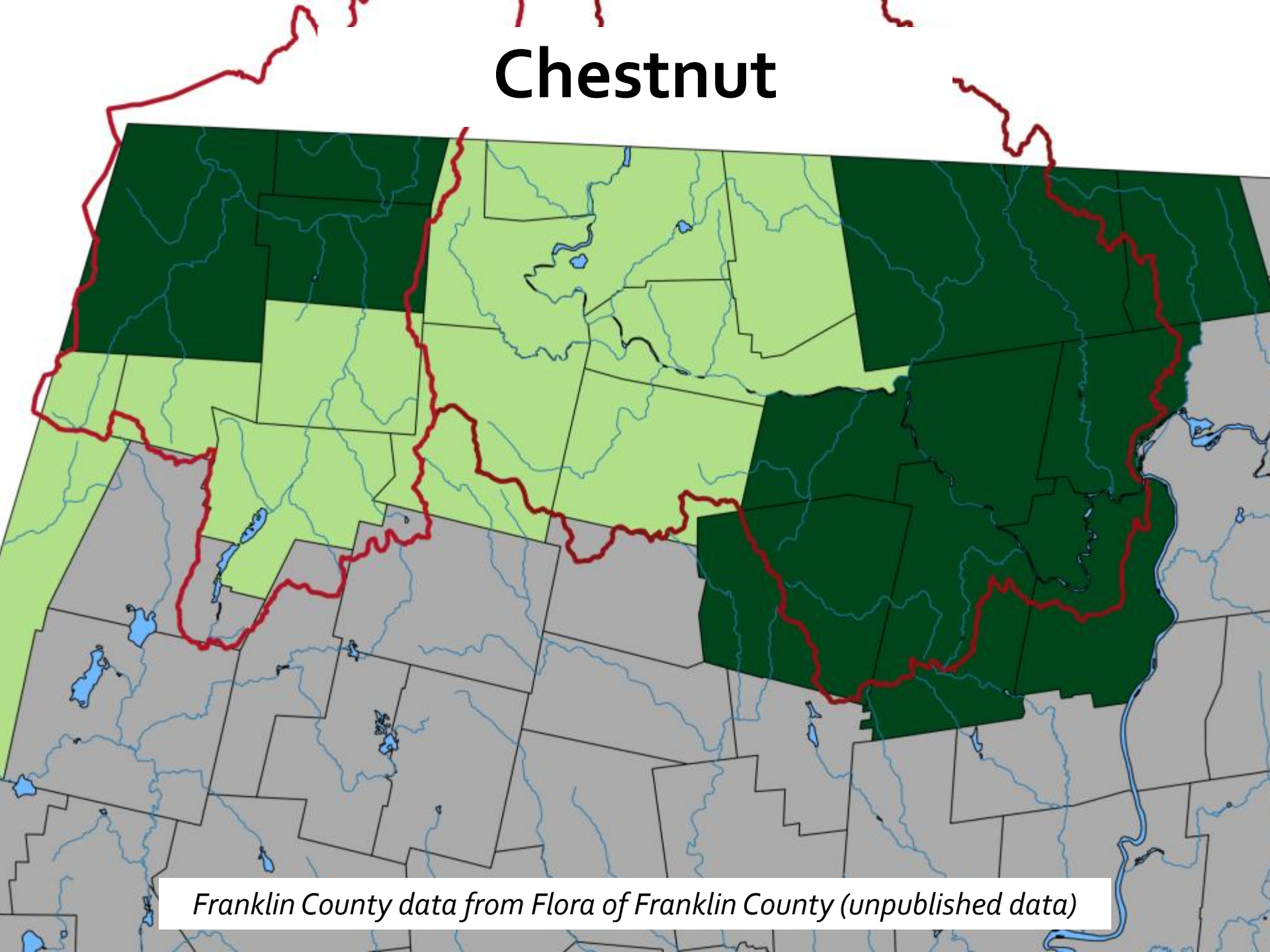
Franklin County data from Flora of Franklin County (unpublished data)

Chestnut Oak



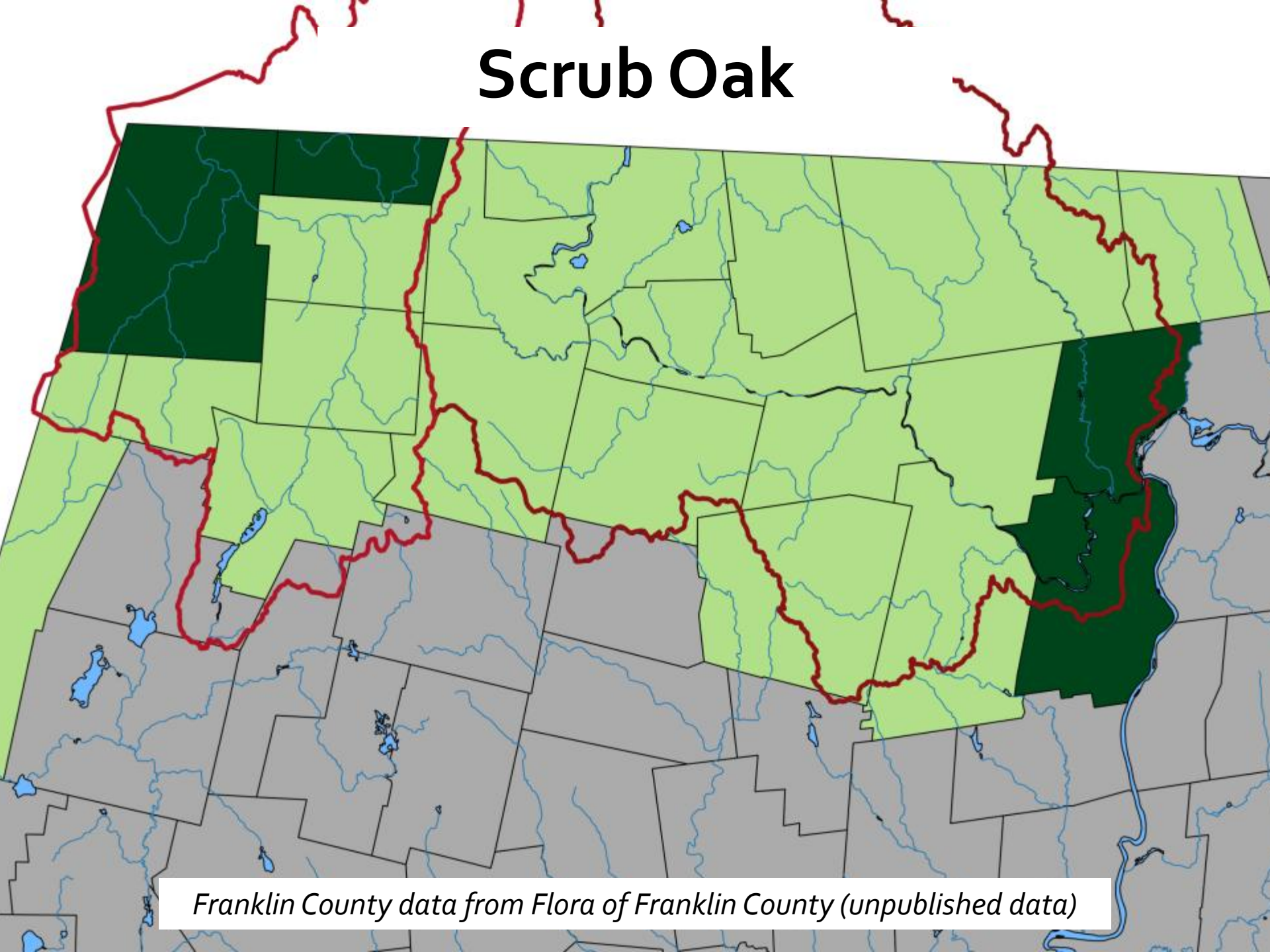
Franklin County data from Flora of Franklin County (unpublished data)

Chestnut



Franklin County data from Flora of Franklin County (unpublished data)

Scrub Oak



Franklin County data from Flora of Franklin County (unpublished data)

A scenic landscape photograph showing a rocky path or clearing in the foreground, surrounded by dense green foliage and trees. In the background, rolling mountains are visible under a clear sky. The image is framed by dark, out-of-focus tree branches in the upper corners.

Opportunity

Species Enrichment/Migration





Lonicera hirsuta



pictured: *Lonicera dioica*

Desmodium cuspidatum

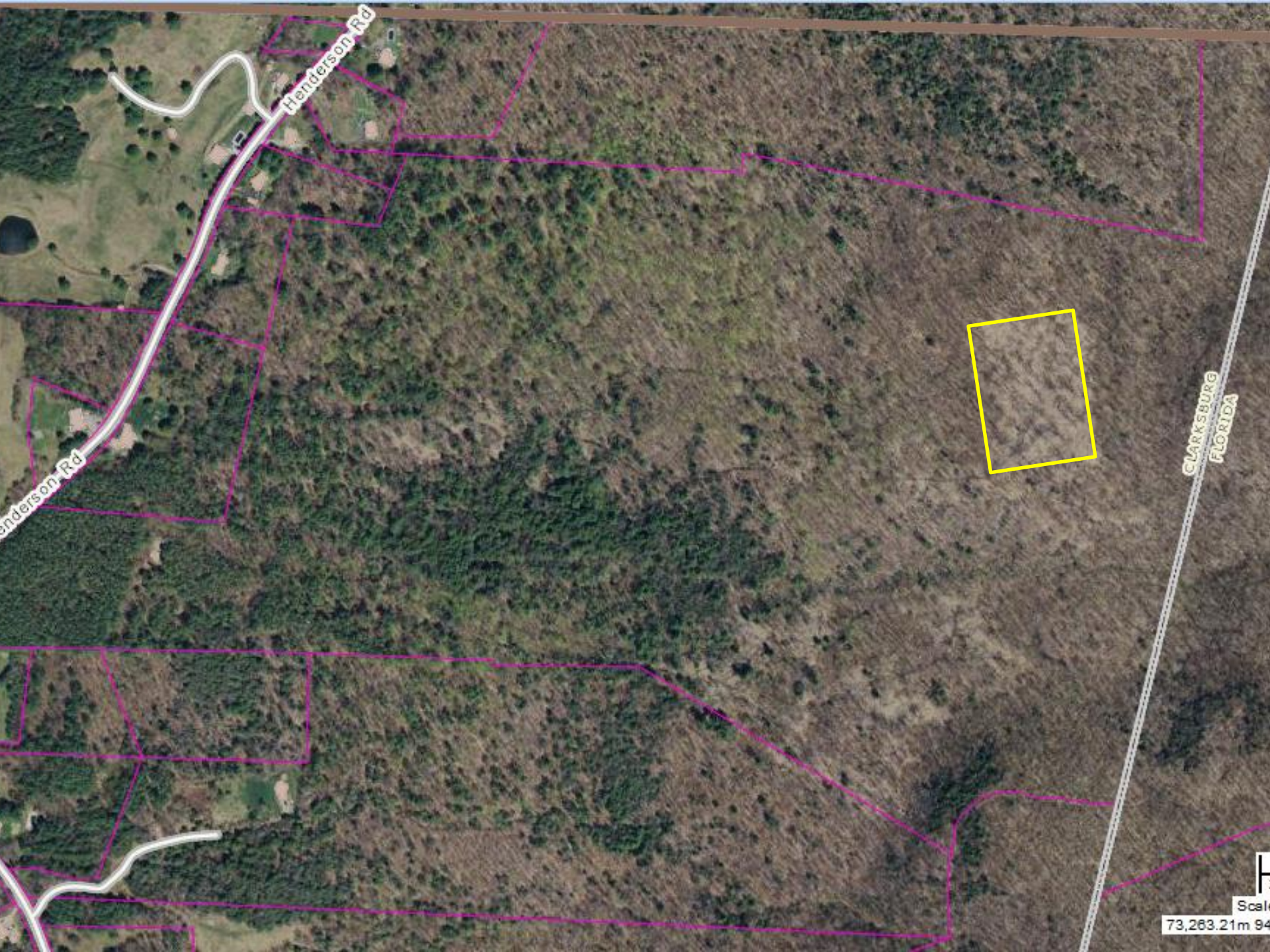


pictured: *Desmodium paniculatum*

Opportunity

Site & Fuel Bed Prep



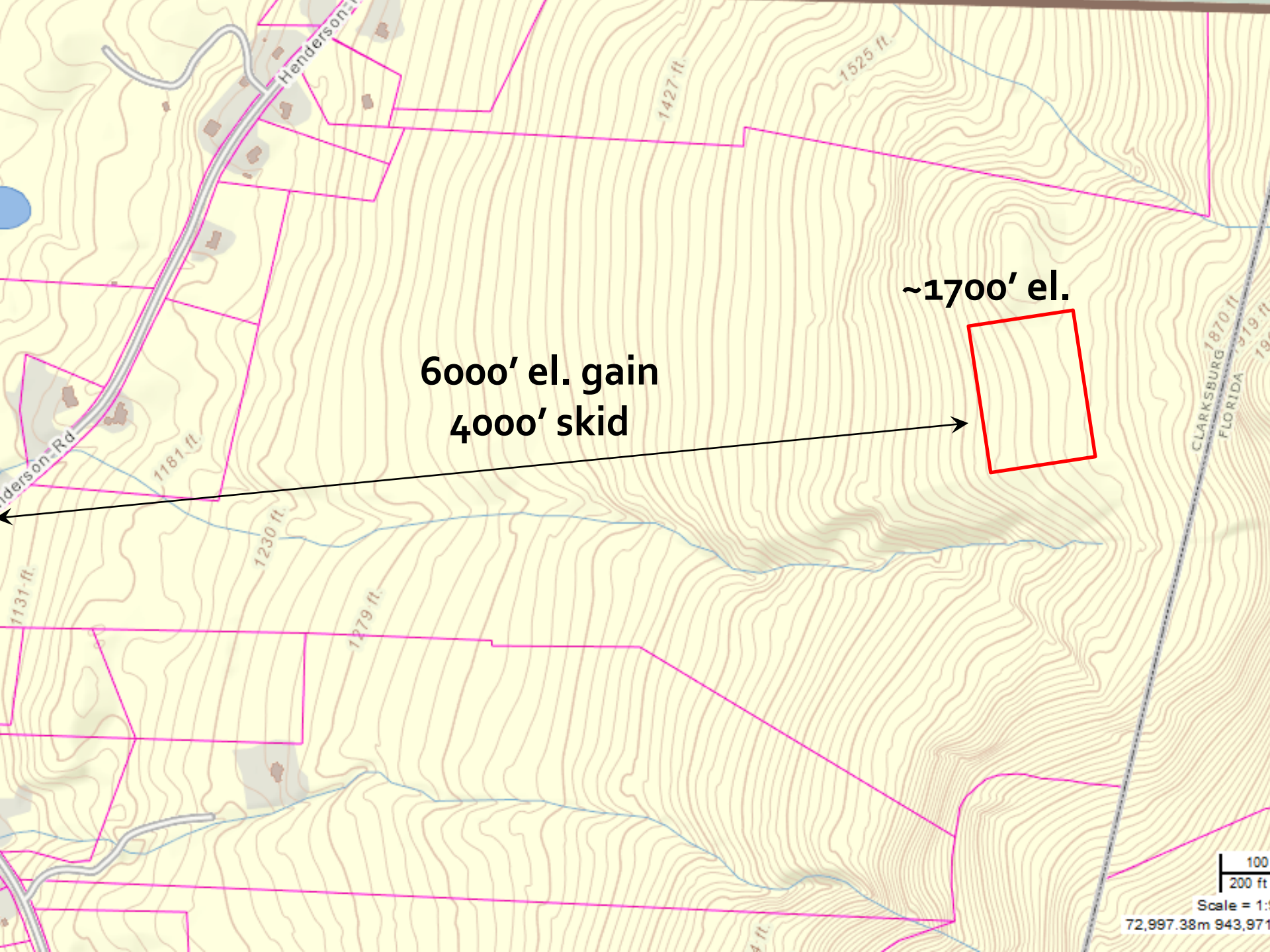


Henderson Rd

Henderson Rd

CLARKSBURG
FLORIDA

Scale
73,263.21m 94



**6000' el. gain
4000' skid**

~1700' el.

CLARKSBURG
FLORIDA

100

200 ft

Scale = 1:

72,997.38m 943,971