

# Challenges for Using Fire in Oak

**Thursday, June 16, 2016 - 1245 to 1310**

**Massachusetts Division of Fish and Wildlife HQ, Westborough, MA**



**Presented By Joel R. Carlson**



**Northeast**

Forest and Fire Management, LLC



**North Atlantic  
Fire Science Exchange**

**Oak Capstone Workshop**





**I WANT TO SET FIRE TO YOUR LAND ! ?**





# SITE EVALUATION







# REGULATIONS & LAWS

- 321 CMR 10.00 - MESA Regulations
- 310 CMR 7.07 - Air Pollution Control - Open Burning
- M.G.L. Ch. 131 - Wetlands Protection Act
- Ch. 132 - MA Forest Cutting Practices Act
- M.G.L. Ch. 48: Sect. 13. - Fires, Fire Departments and Fire Districts - Setting open air fires; conditions and restrictions; penalty for violation
- M.G.L. Ch. 111: Sect. 31C. - Public Health - Atmospheric pollution; regulation and control; publication; hearings; penalties; enforcement; jurisdiction; injunction
- M.G.L. Ch. 111: Sect. 122. - Public Health - Regulations relative to nuisance; examination







# PLANNING



1. Signature Page
2. Go/No-Go Checklists
3. Complexity Analysis Summary
4. Description of Prescribed Fire Area
5. Goals and Objectives
6. Funding
7. Prescription
8. Scheduling
9. Pre-Burn Considerations
10. Briefing
11. Organization and Equipment
12. Communications
13. Safety and Medical

14. Test Fire
15. Ignition Plan
16. Holding Plan
17. Contingency Plan
18. Wildfire Conversion
19. Smoke and Air Quality Management
20. Monitoring
21. Post-burn Activities
- Appendix A: Maps
- Appendix B: Fire Behavior Modeling
- Appendix C: Complexity Analysis
- Appendix D: Job Hazard Analysis
- Appendix E: Technical Reviewer Checklist





# SITE PREPARATION & FIRE SEGREGATES

## Firebreaks





# SITE PREPARATION & FIRE SEGREGATES

## Mechanical Preparation







# IMPLEMENTATION OF A PRESCRIBED BURN





# IMPLEMENTATION OF A PRESCRIBED BURN

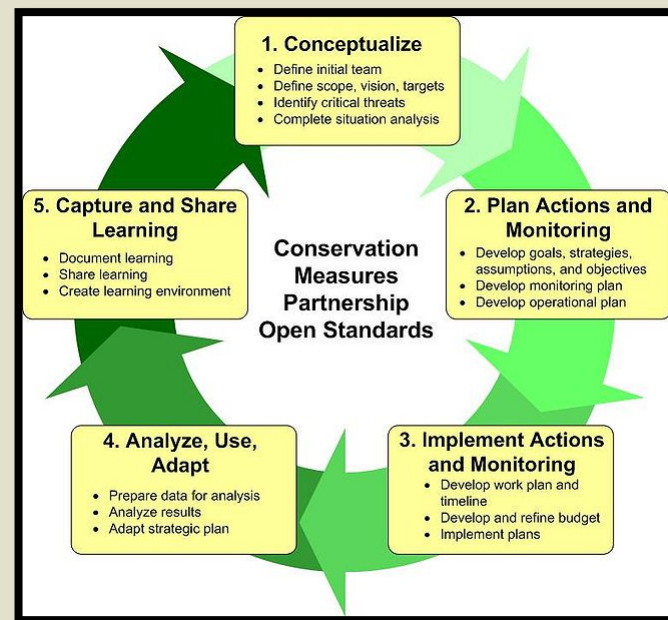






# POST BURN ACTIVITIES

- Check Burn Unit
- Assemble Project File
- Conduct any Needed Post Burn Monitoring
- Use the Adaptive Management Processes







# CONSIDERATIONS FOR MANAGERS

- Long Ramp Up Period
- Funding Sources
- Unpredictability of Weather
- Public Relations
- Organizational Acceptance
- Need for Continued Management
- Liability
- Difficulty in Acquiring Specialized Crew and Equipment







# Massachusetts Landowners/Managers Using Fire

## Not a Complete List

- US Fish and Wildlife Service
- National Park Services
- Massachusetts Division of Fisheries and Wildlife
- Massachusetts Department of Conservation and Recreation
- Massachusetts Army National Guard
- Cape Cod Cooperative Extension
- Towns of Mashpee, Sandwich, Barnstable, Yarmouth, Dennis, Harwich, Orleans, and Gosnold
- Nantucket Memorial Airport
- Nantucket Land Bank
- The Nature Conservancy
- The Trustees
- Nantucket Conservation Foundation
- Barney's Joy Farm Trust
- Orenda Wildlife Land Trust
- Sudbury Valley Trustees
- Naushon Farm
- Bayberry Hills Golf Club
- Vineyard Golf Club
- BAE Systems Inc.
- Mashpee Wampanoag Tribe
- East Quabbin Land Trust







# Massachusetts Fire Practitioners

- US Fish and Wildlife Service
- National Park Services
- US Forest Service
- Massachusetts Division of Fisheries and Wildlife
- Massachusetts Department of Conservation and Recreation
- Northeast Forest and Fire Management, LLC







# Northeast

Forest and Fire Management, LLC

